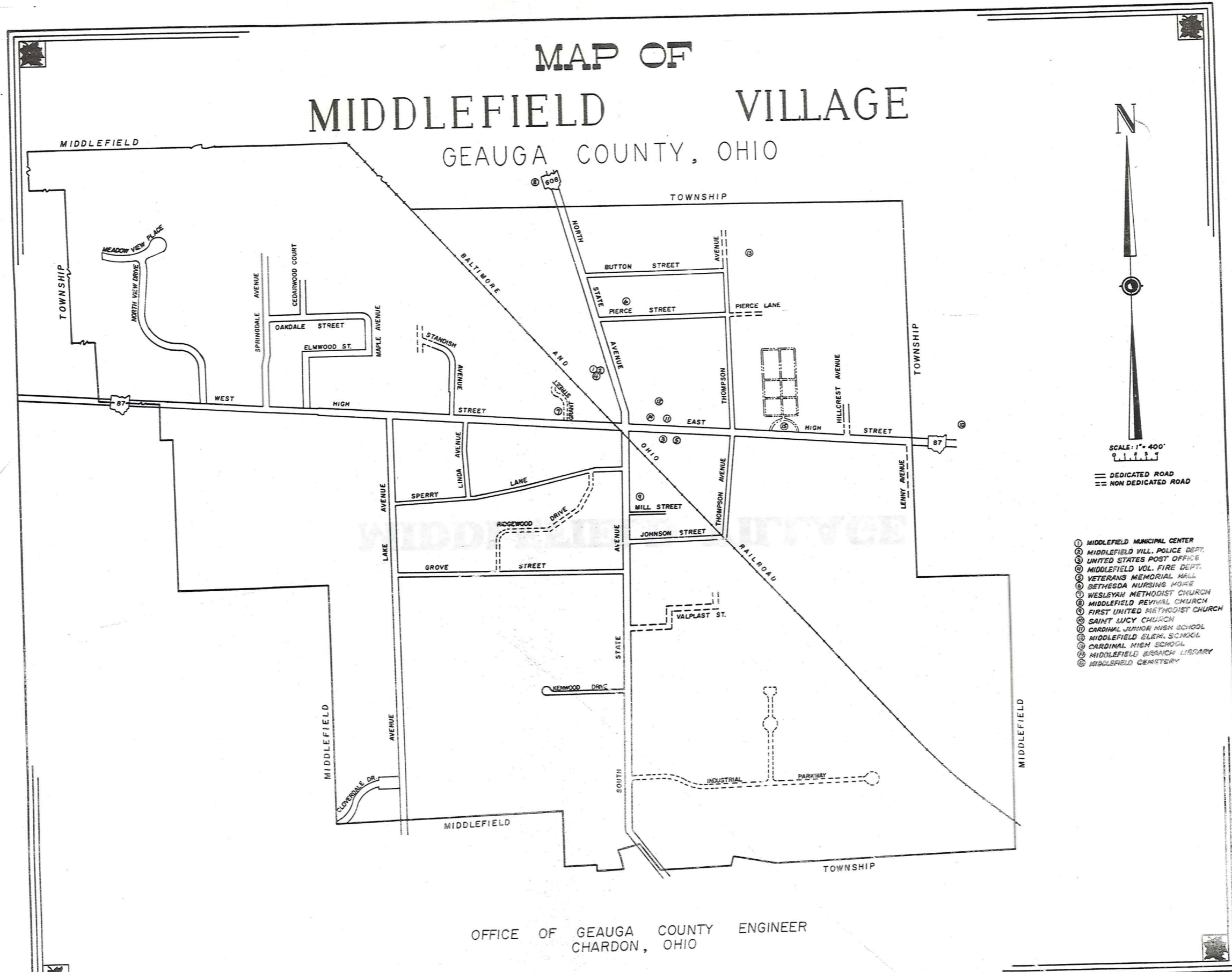




MIDDLEFIELD VILLAGE

MAP OF MIDDLEFIELD VILLAGE

GEAUGA COUNTY, OHIO

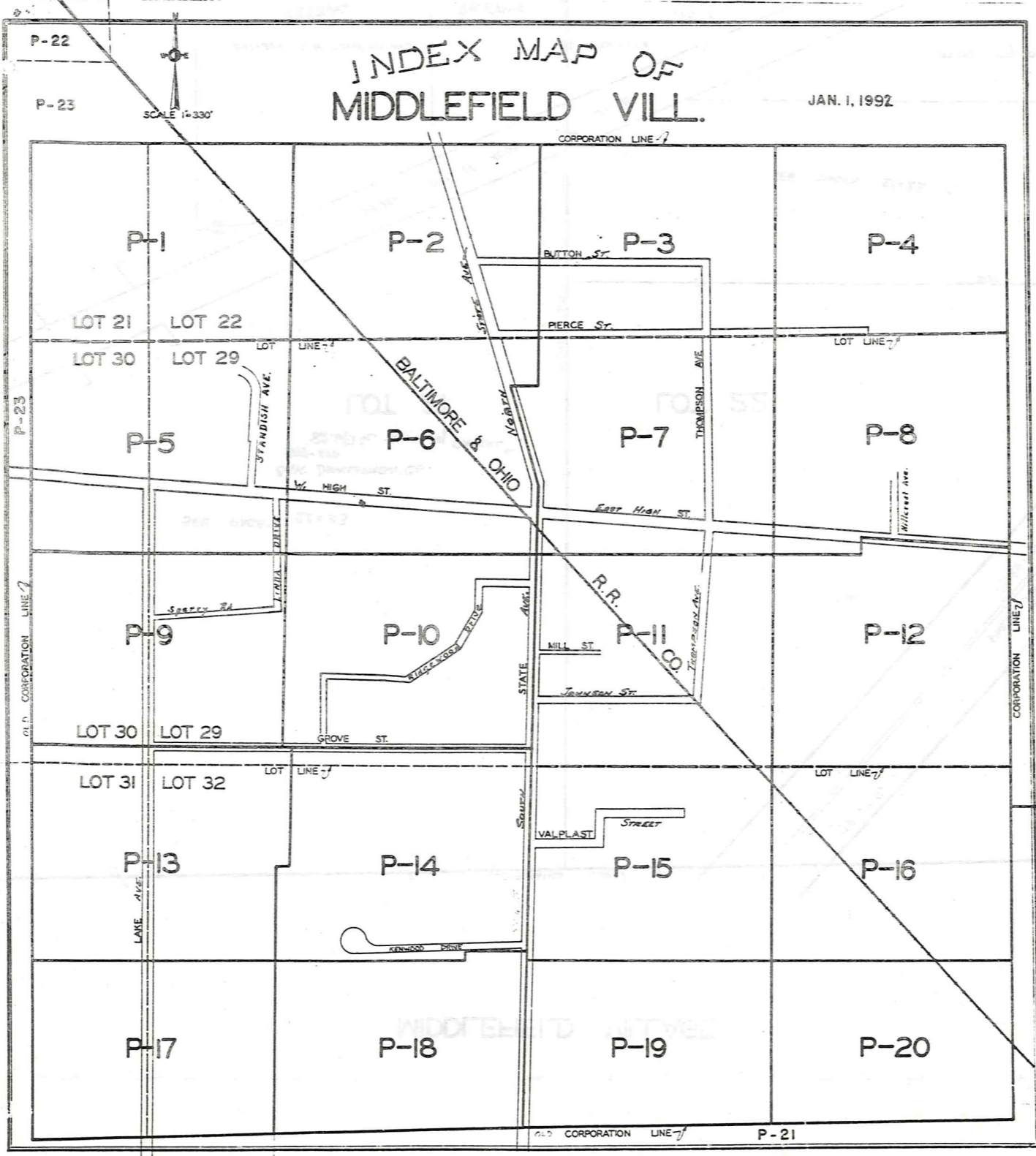


- ① MIDDLEFIELD MUNICIPAL CENTER
- ② MIDDLEFIELD VILL. POLICE DEPT.
- ③ UNITED STATES POST OFFICE
- ④ MIDDLEFIELD VOL. FIRE DEPT.
- ⑤ VETERANS MEMORIAL HALL
- ⑥ BETHESDA NURSING HOME
- ⑦ WESLEYAN METHODIST CHURCH
- ⑧ MIDDLEFIELD REVIVAL CHURCH
- ⑨ FIRST UNITED METHODIST CHURCH
- ⑩ SAINT LUCY CHURCH
- ⑪ CARDINAL JUNIOR HIGH SCHOOL
- ⑫ MIDDLEFIELD ELEM. SCHOOL
- ⑬ CARDINAL HIGH SCHOOL
- ⑭ MIDDLEFIELD BRANCH LIBRARY
- ⑮ MIDDLEFIELD CEMETERY

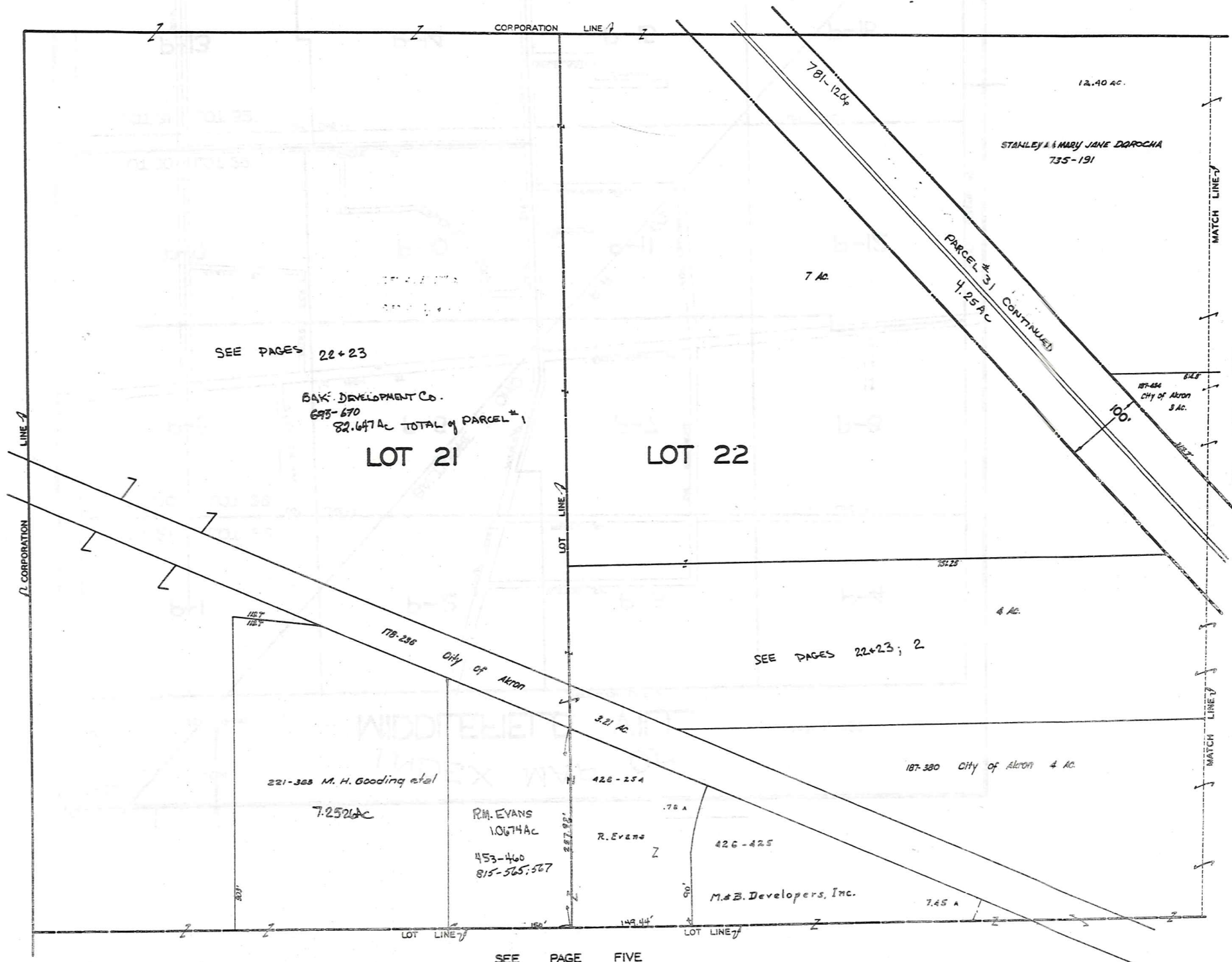
OFFICE OF GEAUGA COUNTY ENGINEER
CHARDON, OHIO

INDEX MAP OF MIDDLEFIELD VILL.

JAN. 1, 1992



MIDDLEFIELD VILLAGE

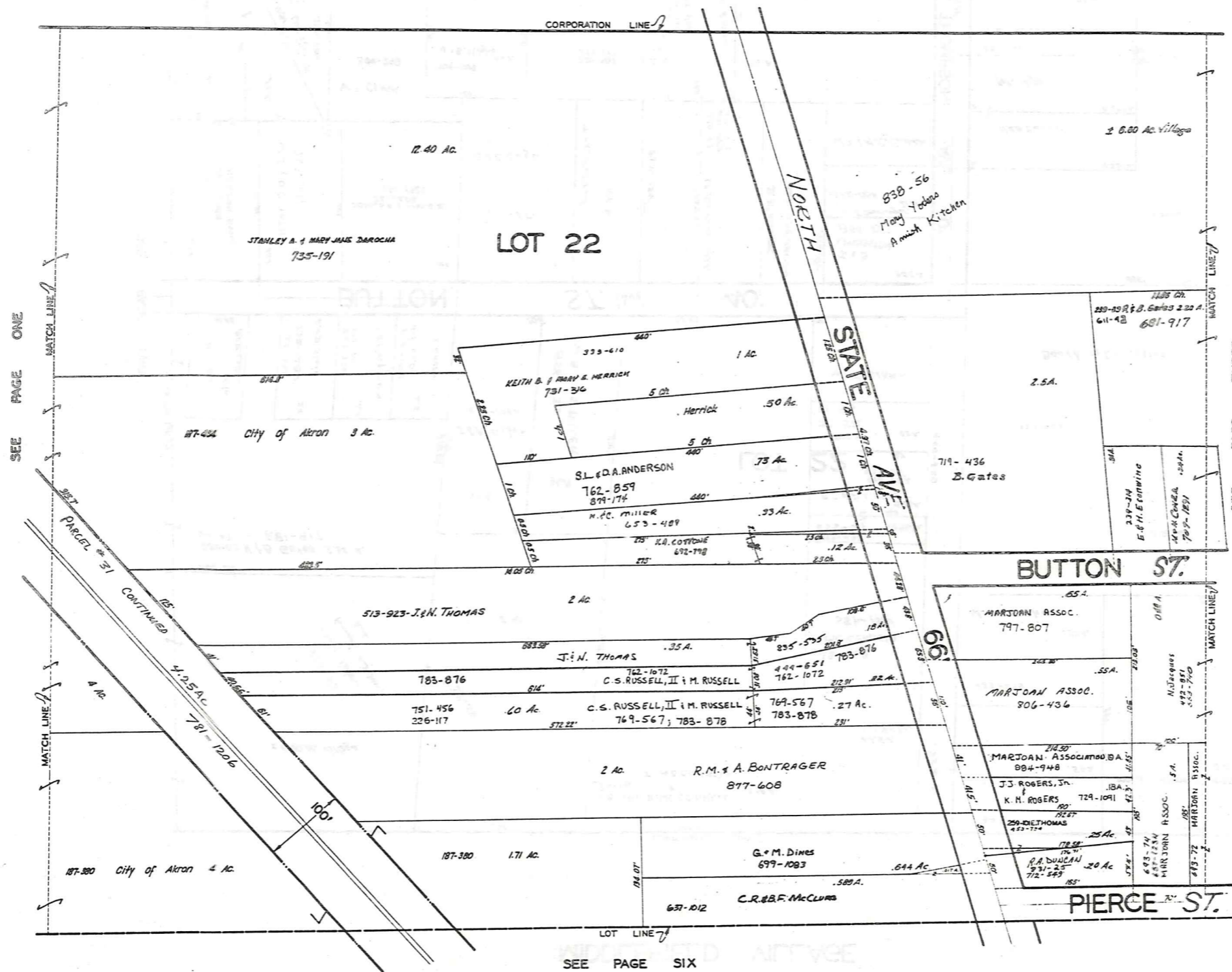


JANUARY 1, 1992

SEE PAGE FIVE

RELATIVE REPRESENTATION
MIDDLEFIELD VILLAGE
PG. 1

MIDDLEFIELD VILLAGE



SEE PAGE ONE

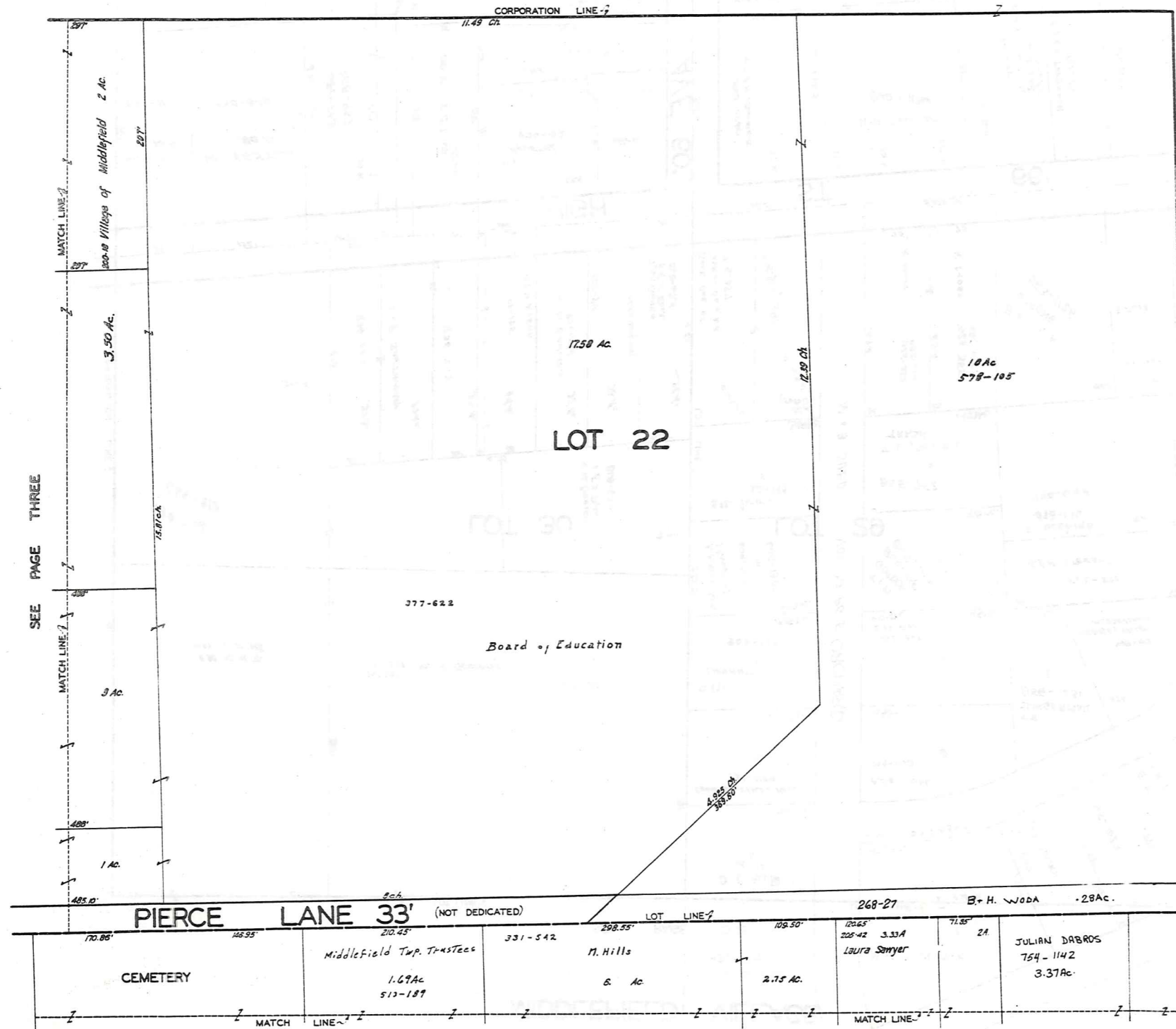
SEE PAGE THREE



SCALE 1"=60'

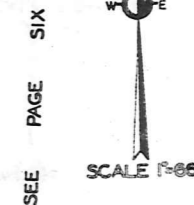
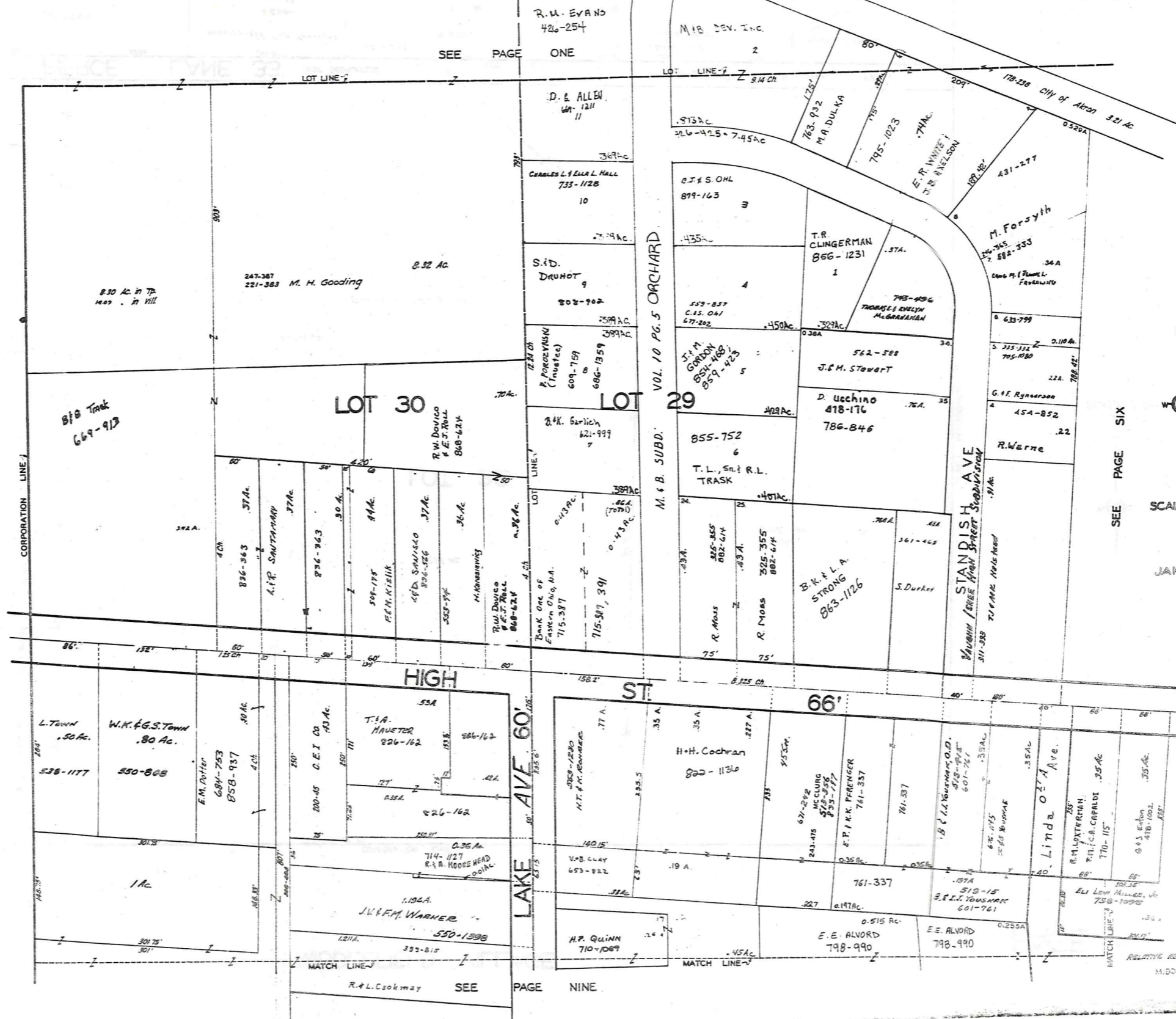
JAN. 1, 1991

SEE PAGE SIX



JANUARY 1, 1992
RELATIVE REPRESENTATION

MIDDLEFIELD VILLAGE



JAN. 1, 1995

SEE PAGE NINE

RELATIVE REPRESENTATION
MIDDLEFIELD VILLAGE
PG. 5

MIDDLEFIELD VILLAGE



SEE PAGE SIX

SEE PAGE THREE

LOT 29

THOMPSON AVE

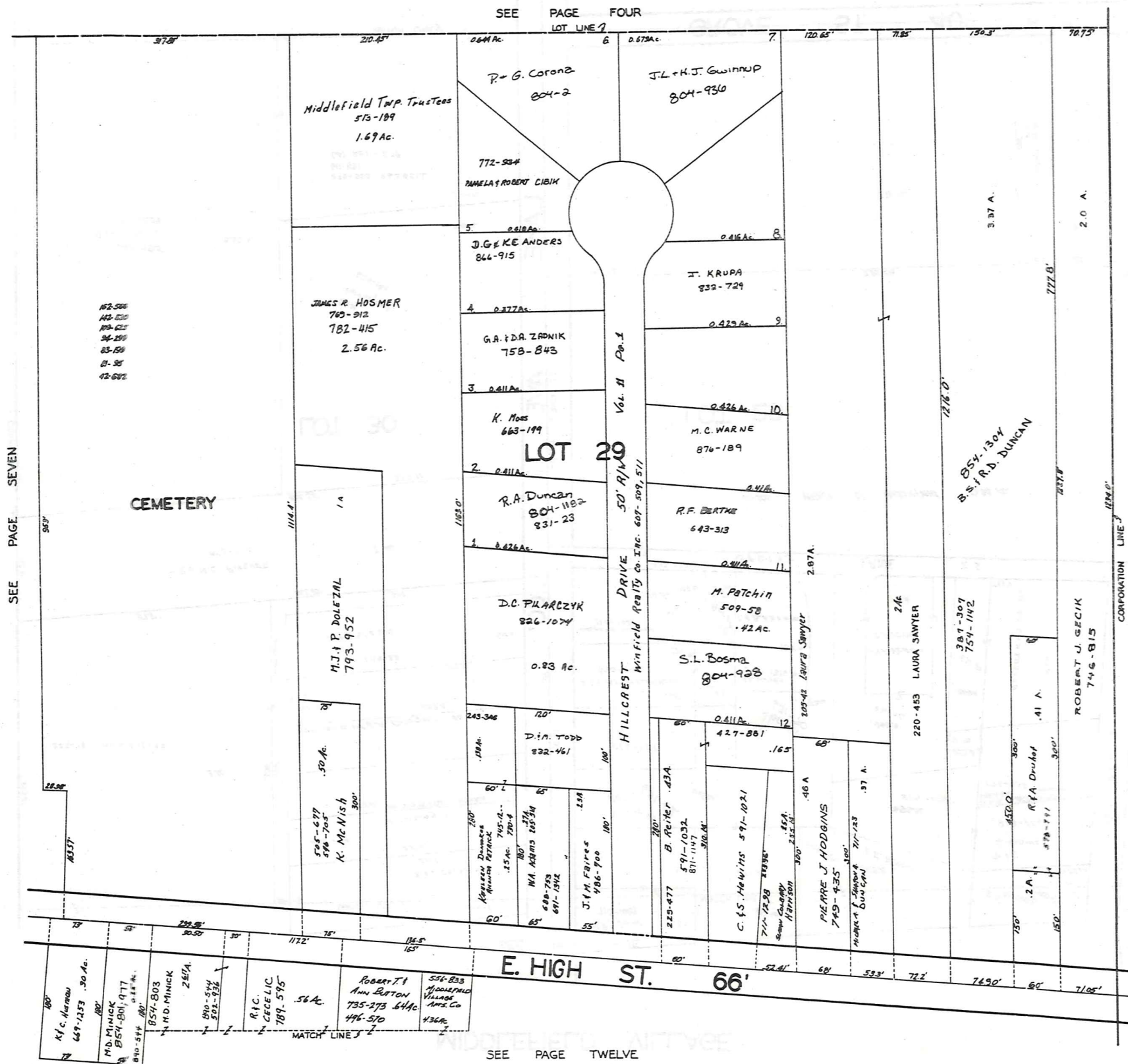
SEE PAGE EIGHT



SEE PAGE ELEVEN

JANUARY 1, 1992
 RELATIVE REPRESENTATION
 MIDDLEFIELD VILLAGE
 PG. 7

SEE PAGE FOUR



SEE PAGE SEVEN

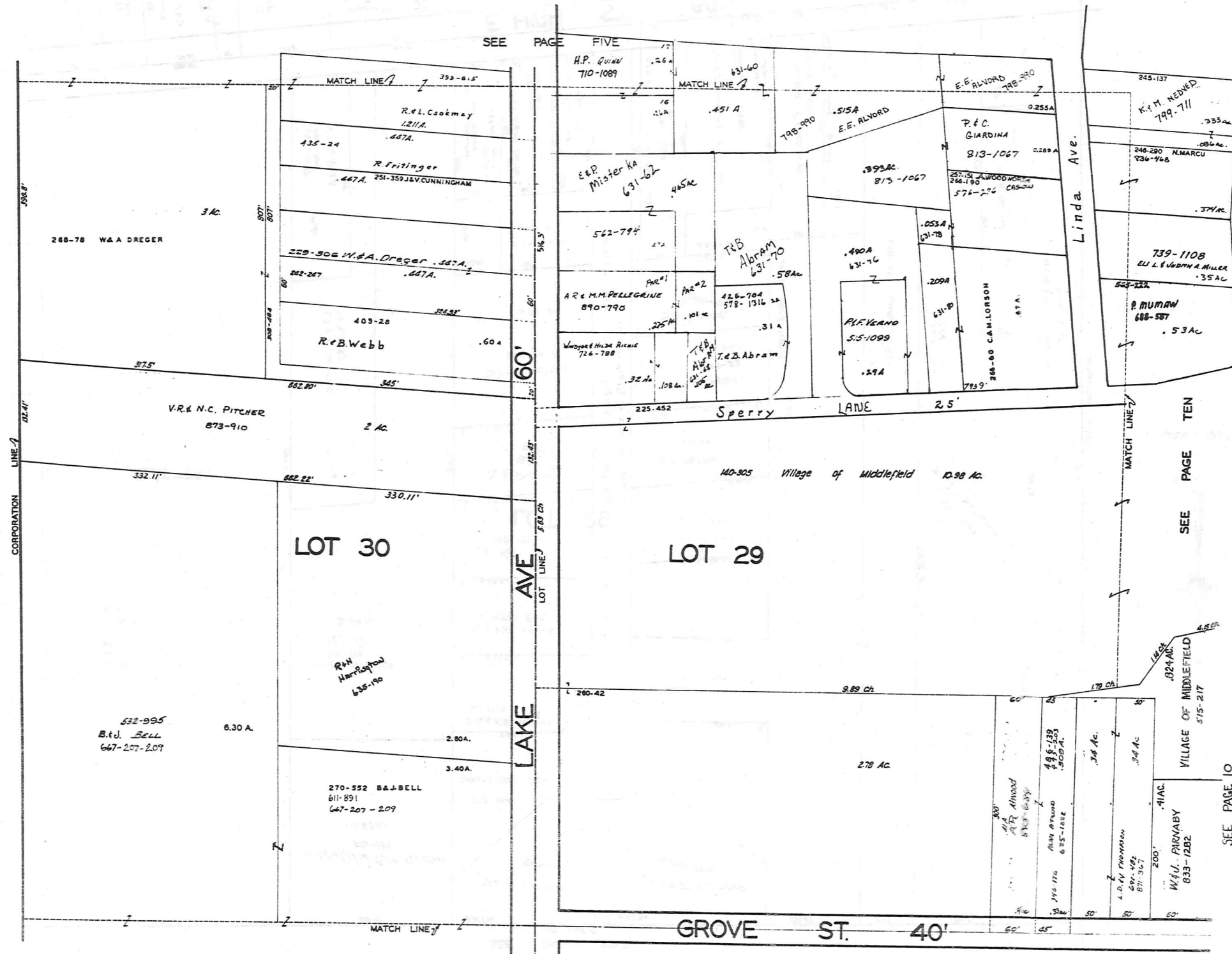
SEE PAGE TWELVE



JAN. 1, 1992

RELATIVE REPRESENTATION
MIDDLEFIELD VILLAGE
PG. 8

309

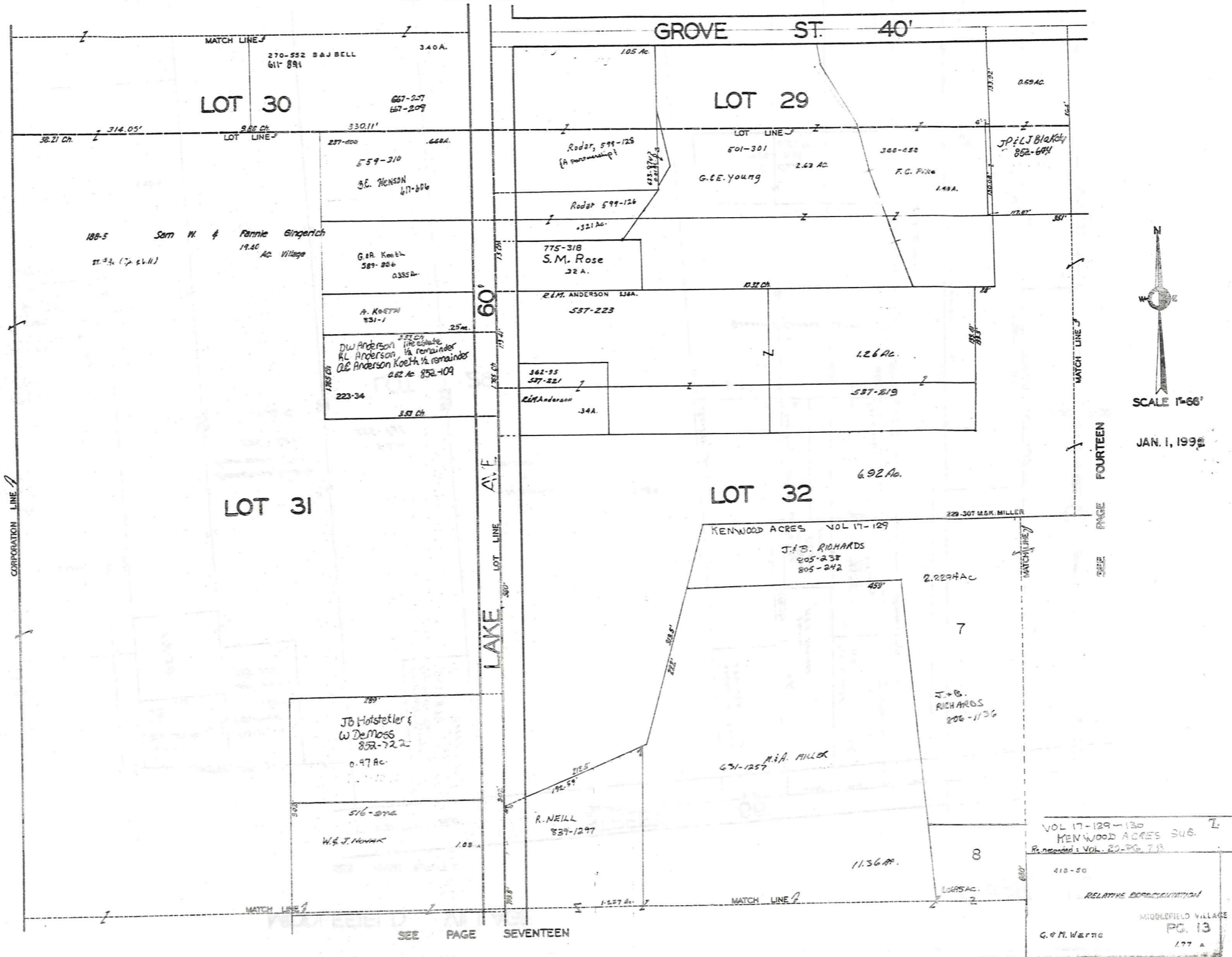


JAN. 1, 1991

SEE PAGE THIRTEEN

RELATIVE REPRESENTATION
MIDDLEFIELD VILLAGE
PG. 9

SEE PAGE NINE



SCALE 1"=66'

JAN. 1, 1995

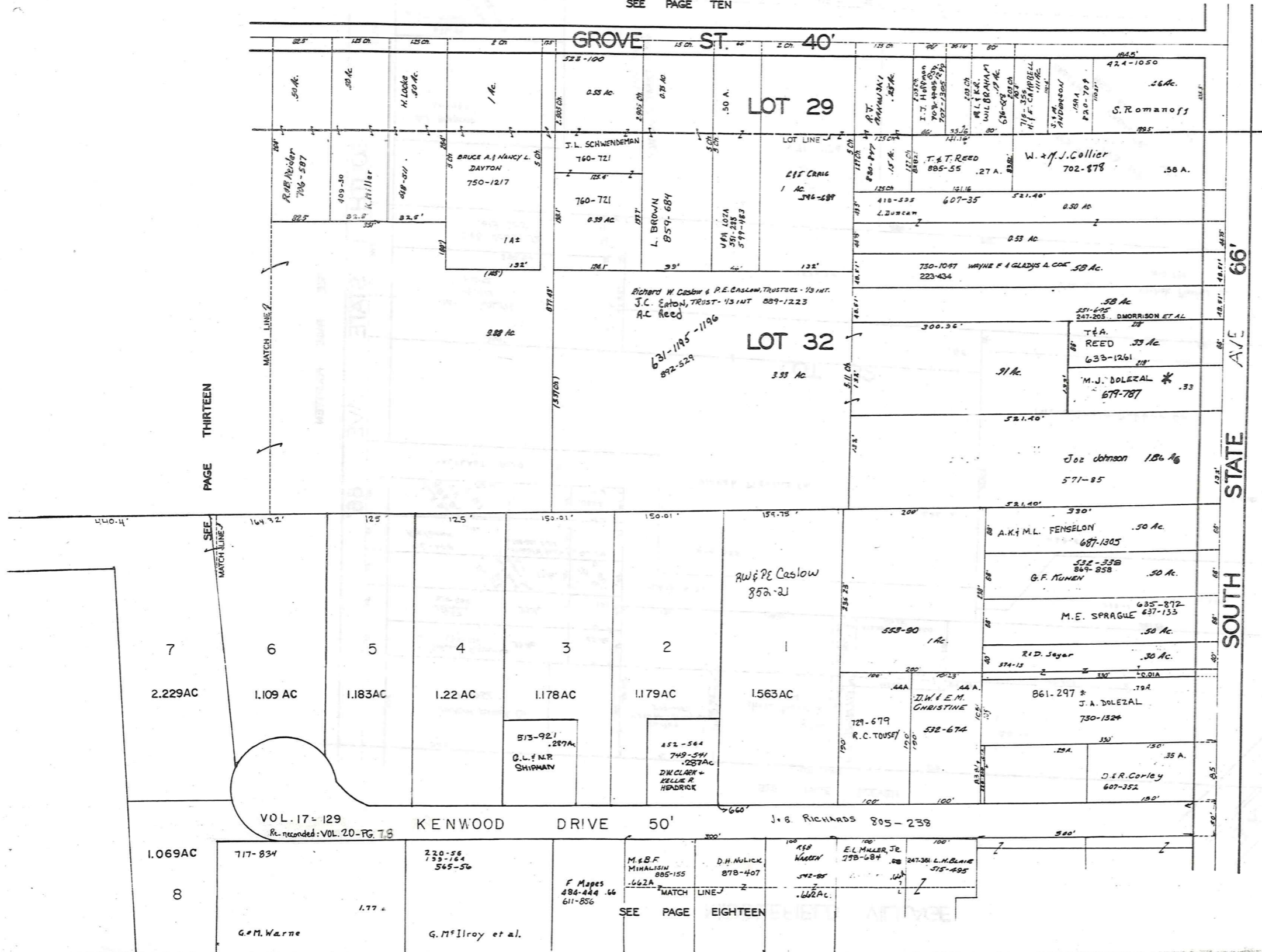
SEE PAGE FOURTEEN

SEE PAGE SEVENTEEN

VOL 17-129-130
 KENWOOD ACRES SUB.
 R. recorded: VOL. 20-PG. 7A
 410-50
 RELATIVE ERROR/OMISSION
 MIDDLEFIELD VILLAGE
 PG. 13
 G.M. Werno
 177 A

MIDDLEFIELD VILLAGE

SEE PAGE TEN

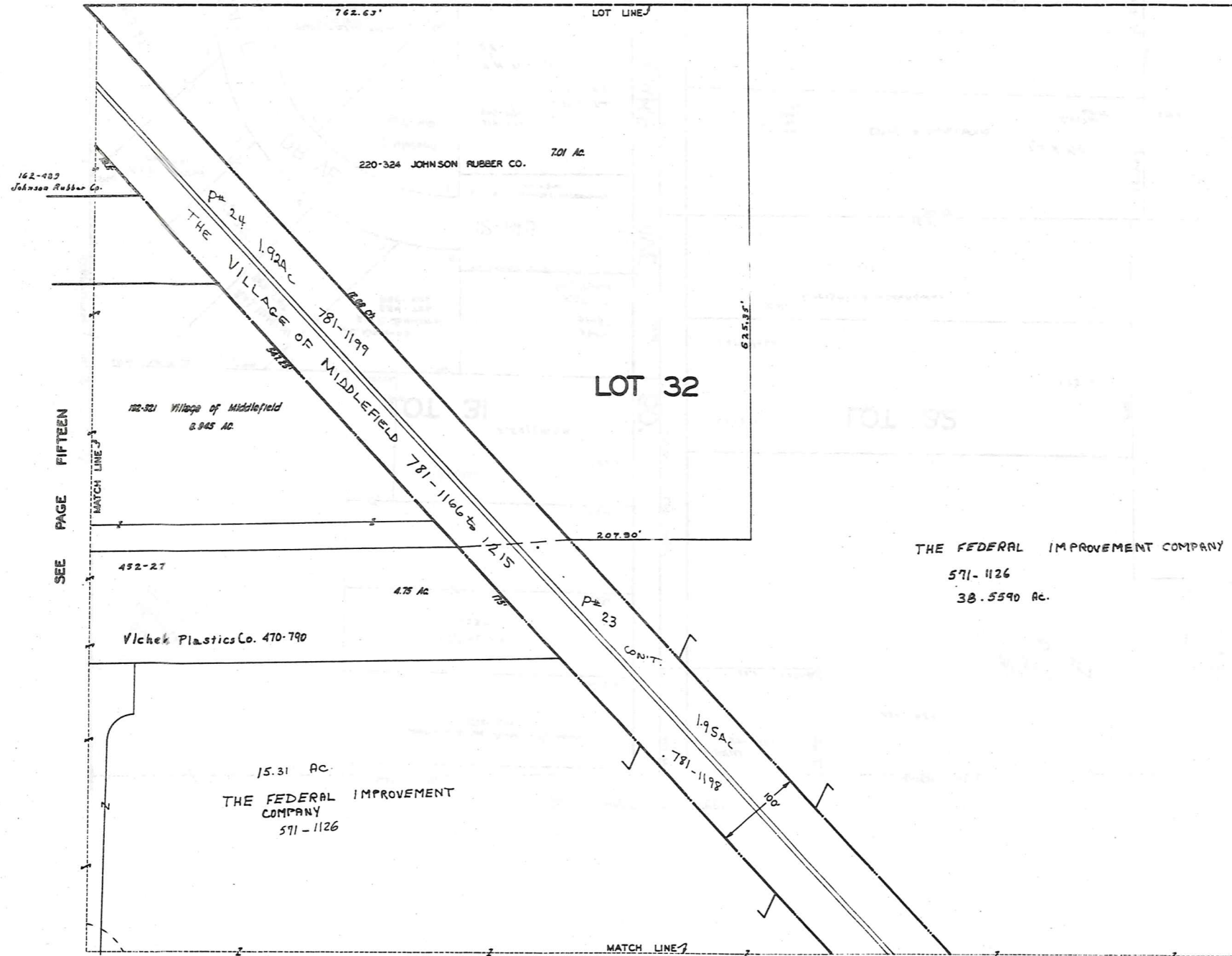


JAN. 1, 1992

SEE PAGE FIFTEEN

RELATIVE REPRESENTATION
MIDDLEFIELD VILLAGE
PG. 14

SEE PAGE TWELVE



SEE PAGE FIFTEEN

SEE PAGE 21



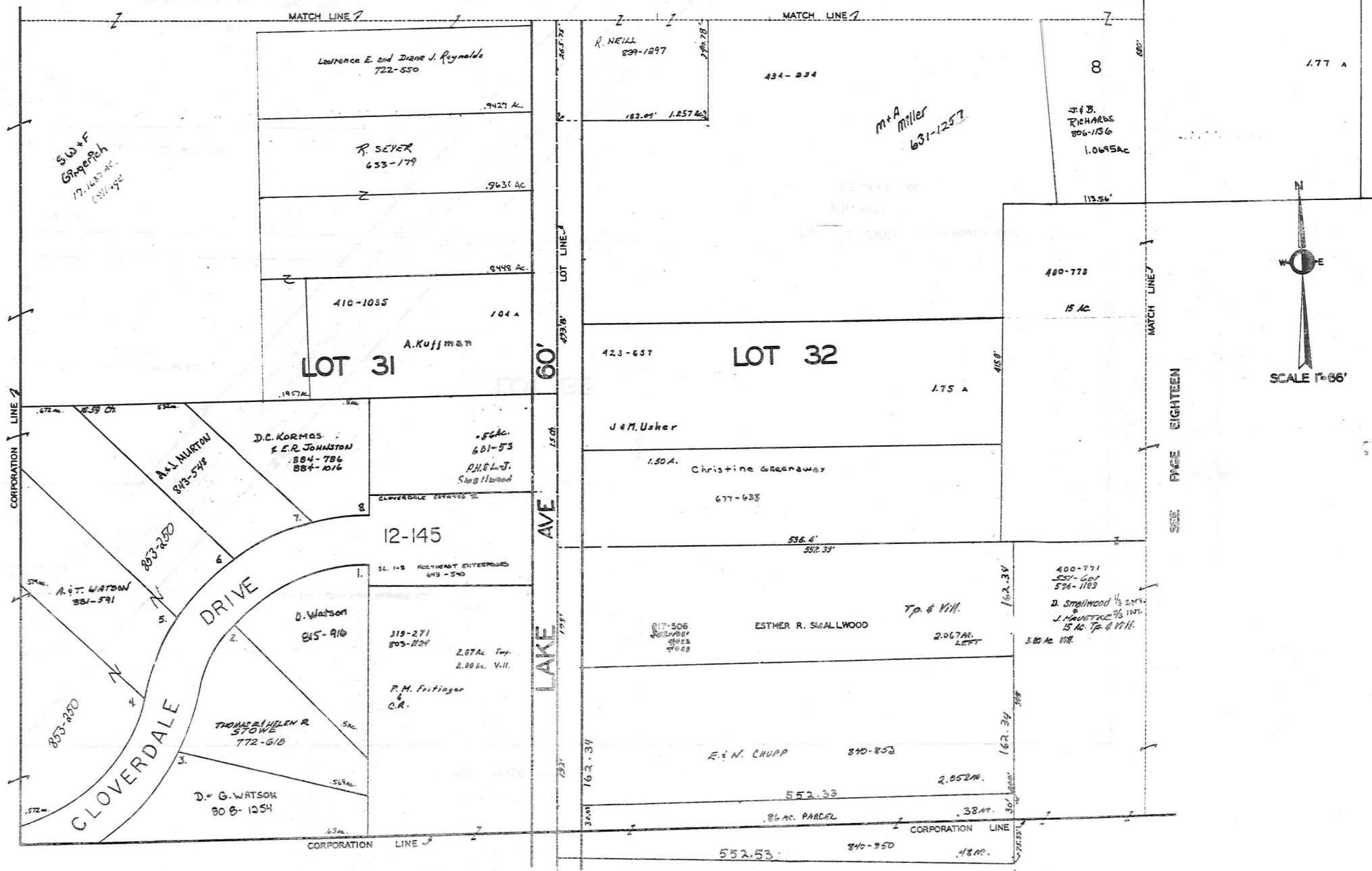
SEE PAGE TWENTY

RELATIVE REPRESENTATION
MIDDLEFIELD VILLAGE
PG. 16

MIDDLEFIELD VILLAGE

VOL 17-129
KENWOOD ACRES SUB.
Re-recorded: VOL 20-PG 7, 8

SEE PAGE THIRTEEN

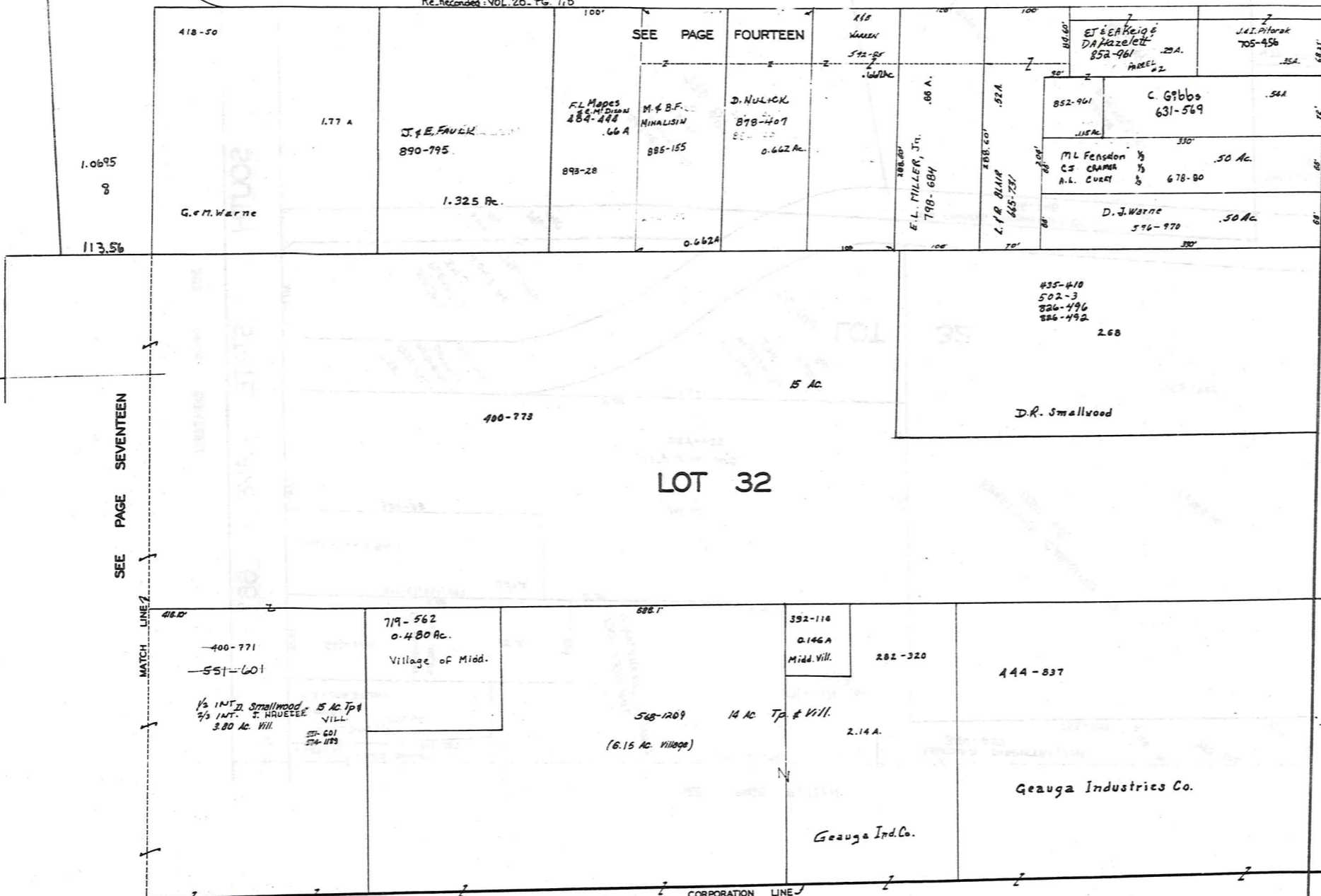


SEE PAGE EIGHTEEN

JANUARY 4, 1972
RELATIVE REPRESENTATION

MIDDLEFIELD VILLAGE

VOL 17 - P. 129 Re-recorded: VOL 20 - Pg. 7, 8 KENWOOD DRIVE 50' 50'



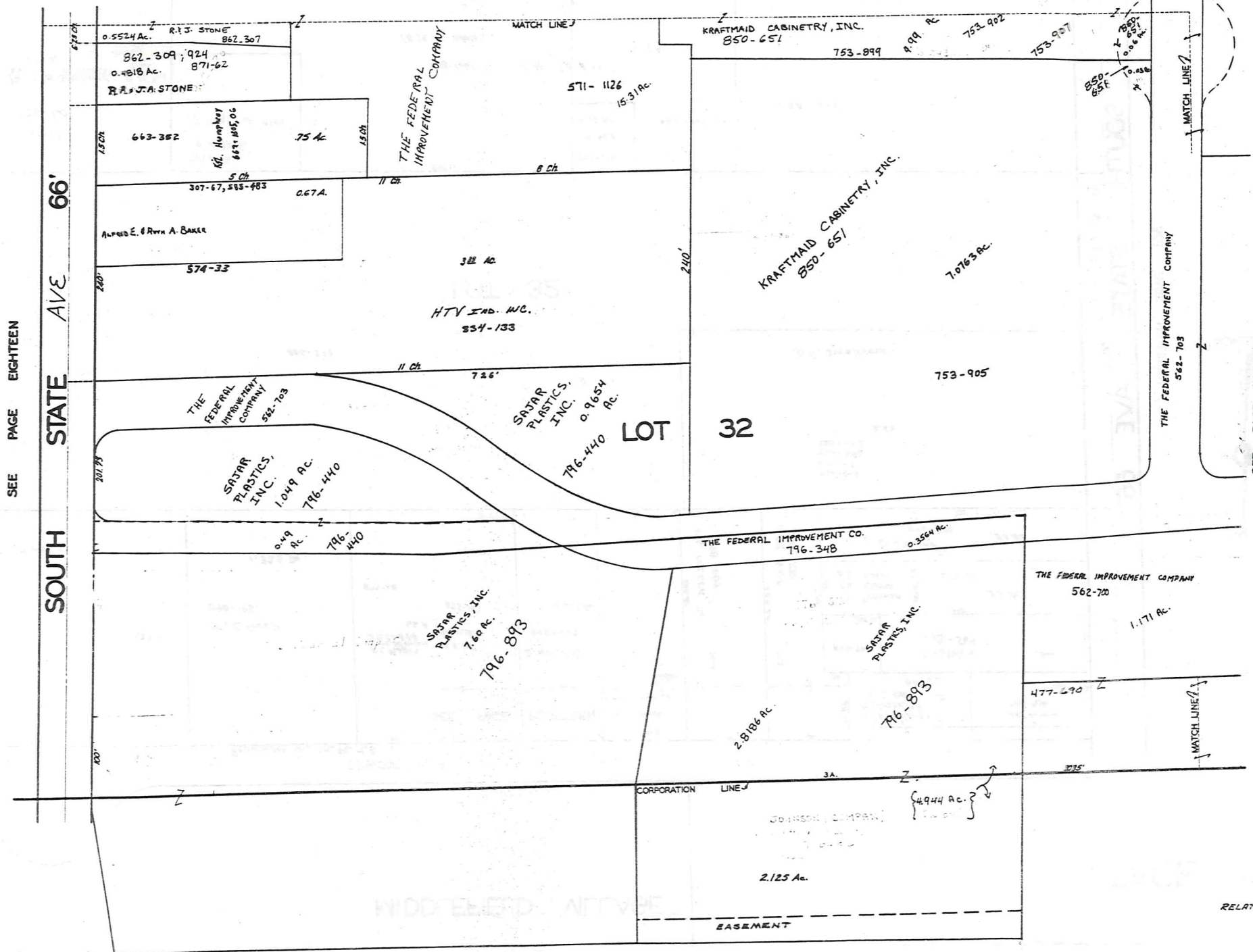
SEE PAGE NINETEEN

SEE PAGE SEVENTEEN

MAIN ST SOUTH STATE AVE 66'

MIDDLEFIELD VILLAGE

SEE PAGE FIFTEEN



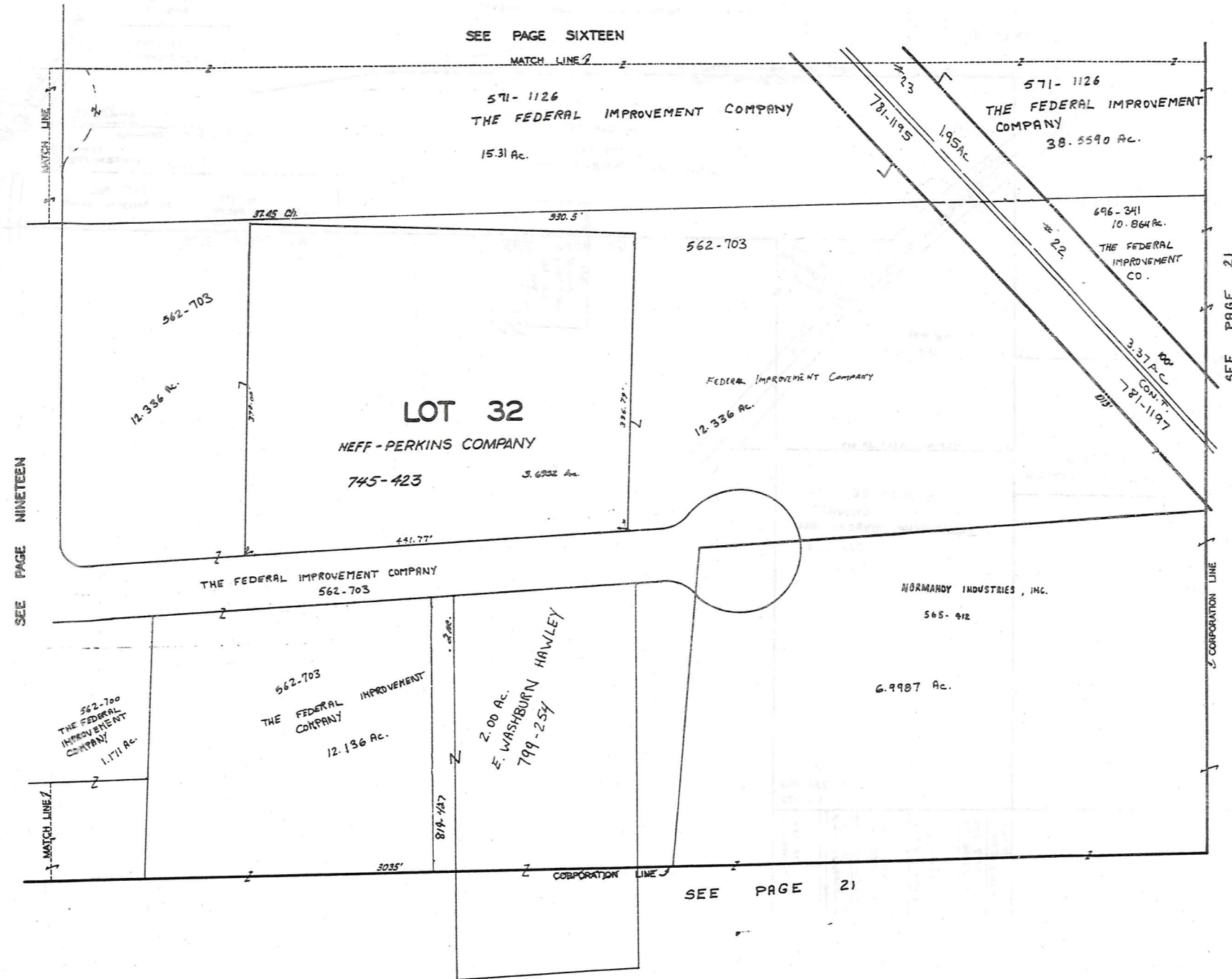
SEE PAGE EIGHTEEN

SOUTH STATE AVE 66'

SEE PAGE TWENTY



SCALE 1"=66'
JAN. 1, 1992



SEE PAGE NINETEEN

SEE PAGE SIXTEEN

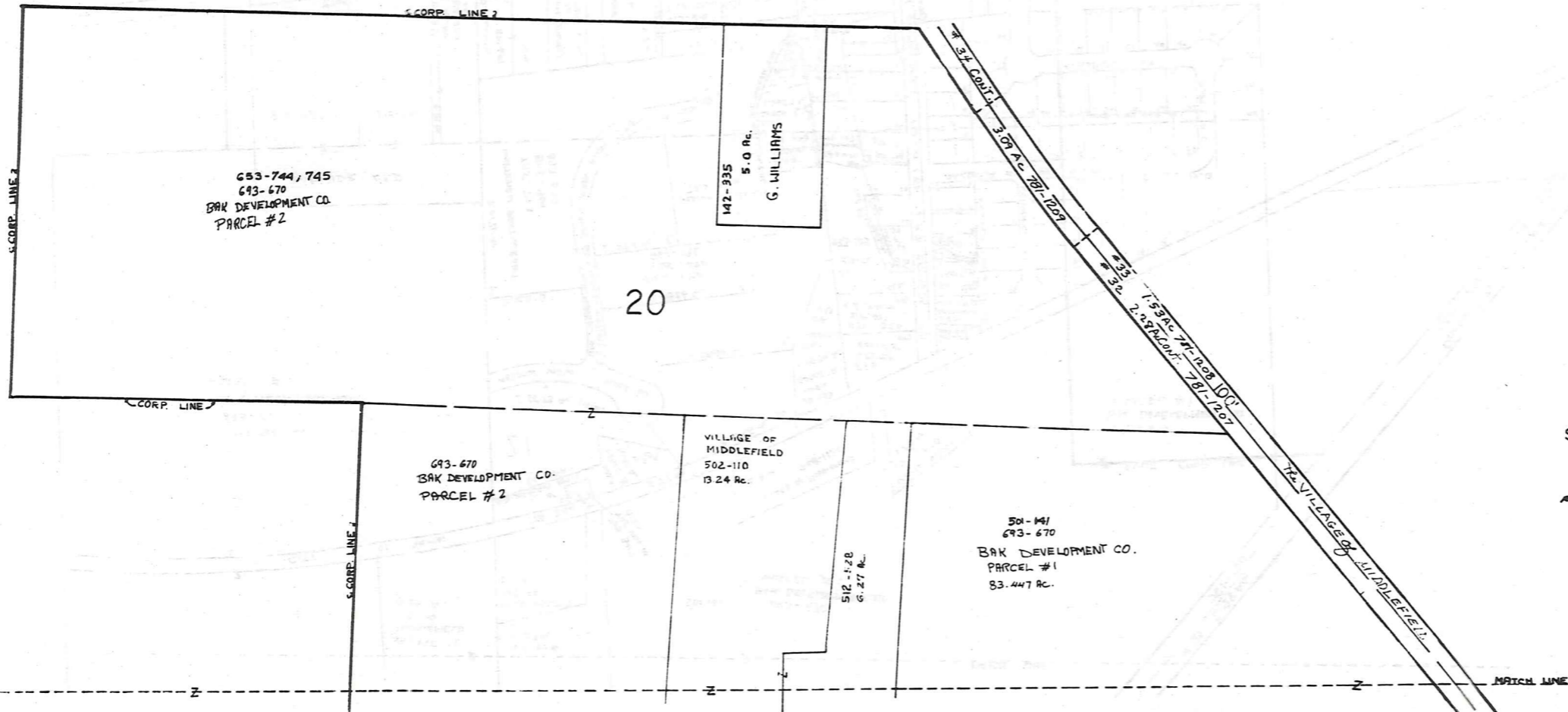
SEE PAGE 21

SEE PAGE 21



JAN 1, 1990

W. WALDEN

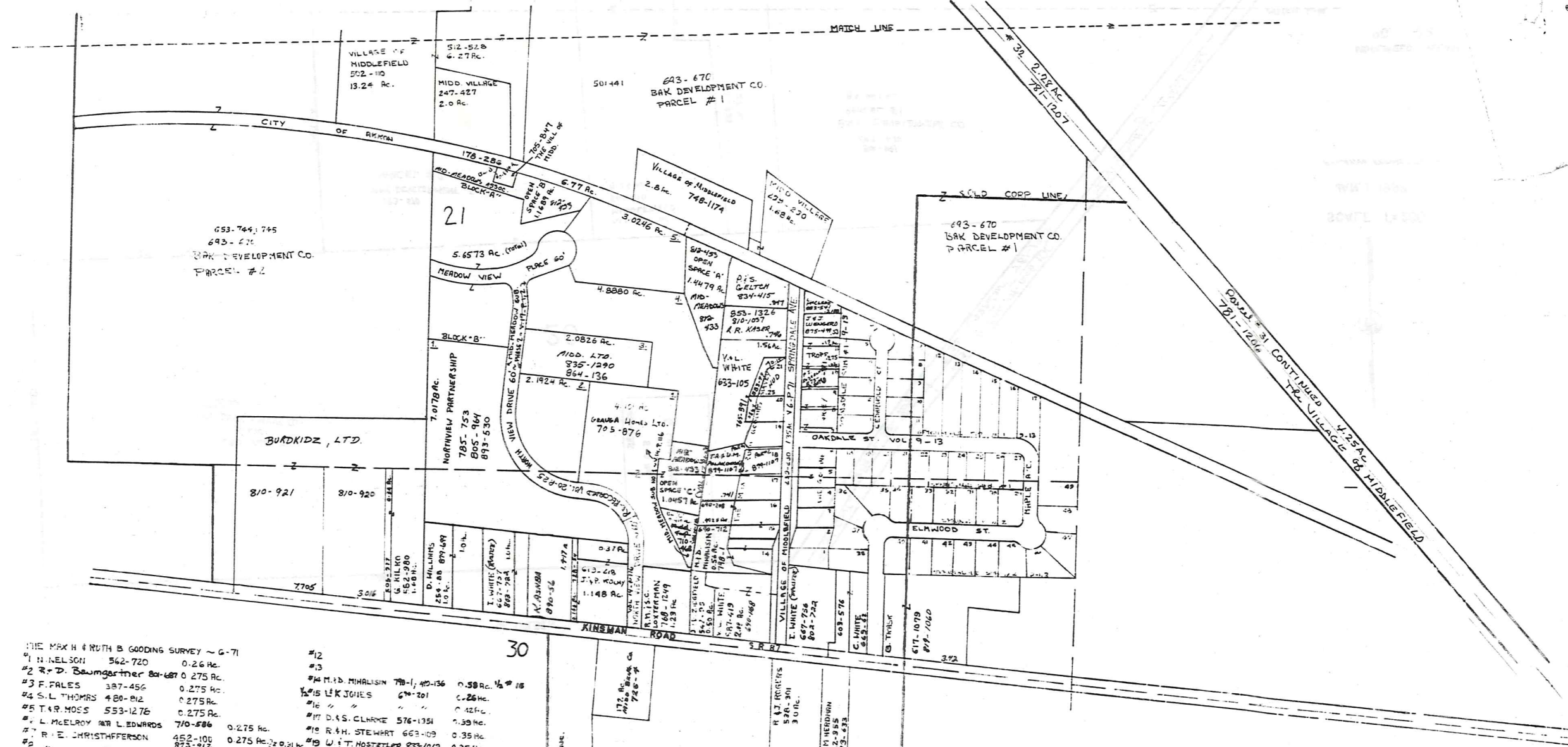


SCALE 1" = 200'

JAN. 1, 1992

RELATIVE REPRESENTATION

MIDDLEFIELD VLLAGE
PG. 22



- | | |
|--|--|
| <p>THE MAX H & RUTH B GOODING SURVEY ~ G-71</p> <p>#1 H. NELSON 562-720 0.26 Ac.</p> <p>#2 R. D. Baumgartner 801-687 0.275 Ac.</p> <p>#3 F. PALES 387-456 0.275 Ac.</p> <p>#4 S. L. THOMAS 480-812 0.275 Ac.</p> <p>#5 T. R. MOSES 553-1276 0.275 Ac.</p> <p>#6 L. McLEROY & L. EDWARDS 710-586 0.275 Ac.</p> <p>#7 R. E. CHRISTOFFERSON 452-100 0.275 Ac.</p> <p>#8 " " 875-912 0.275 Ac.</p> <p>#9 J. M. BARKHOLTER 495-418 0.275 Ac.</p> <p>#10 K. J. HERRON 785-9 0.275 Ac.</p> <p>#11 G. J. TROFF 495-250 0.275 Ac. (734-289)</p> | <p>#12</p> <p>#13</p> <p>#14 M. D. MINALISIN 781-1, 10-136 0.58 Ac. 1/2 # 15</p> <p>#15 W. K. JONES 670-201 0.26 Ac.</p> <p>#16 " " " " 0.26 Ac.</p> <p>#17 D. S. CLARKE 576-1351 0.39 Ac.</p> <p>#18 R. H. STEWART 663-09 0.35 Ac.</p> <p>#19 W. T. MOSTLER 833-1012 0.35 Ac.</p> <p>#20 J. W. B. STEELE 765-891 0.26 Ac.</p> <p>#21 J. K. HEUN 799-736 0.23 Ac.</p> <p>#22 R. L. WAGER 524-33 0.37 Ac.</p> |
|--|--|
-
- | | |
|--|---|
| <p>SPRINGDALE SUBDIVISION NO. 1 & NO. 2</p> <p>#1 D. M. PULTON 705-721 0.247 Ac.</p> <p>#2 K. OUILLEN 550-852 0.23 Ac.</p> <p>#3 P. L. WISDOM 785-31, 337-644 0.23 Ac.</p> <p>#4 S. M. KOZOLKO 309-235 0.23 Ac.</p> <p>#5 G. M. & B. J. WILKES 537-639 0.235 Ac.</p> <p>#6 C. N. LANGHAM 562-906 0.233 Ac.</p> <p>#7 A. J. SATERLEE 805-442 0.247 Ac.</p> <p>#8 G. FULOP 780-739 0.282 Ac.</p> <p>#9 H. D. BARCICHOWSKI 537-924 0.250 Ac.</p> <p>#10 G. C. & J. E. TROFF 734-289 0.25 Ac.</p> <p>#11 R. E. STEWART 503-722 0.247 Ac.</p> <p>#12 E. E. SELBY 484-600 0.580 Ac.</p> <p>#13 M. E. BRILLA et al. 485-54 0.524 Ac.</p> <p>#14 W. B. OSMOND 576-1033 0.463 Ac.</p> | <p>#15 W. B. OSMOND 576-1032 0.412 Ac.</p> <p>#16 M. MALLISKI 791-650 0.356 Ac. 1857-887</p> <p>#17 R. DeMARCO 413-1266 0.373 Ac.</p> <p>#18 D. C. Hersh 810-243 0.237 Ac.</p> <p>#19 J. J. DETWILER 532-226 0.250 Ac.</p> <p>#20 " " 845-1198 0.250 Ac.</p> <p>#21 E. C. Ziegler 702-551 0.250 Ac.</p> <p>#22 J. D. SMITH 617-723 0.250 Ac.</p> <p>#23 L. G. & L. EIERMAN 593-303 0.250 Ac.</p> <p>#24 B. R. HATCH 713-222 0.250 Ac.</p> <p>#25 E. M. COX 855-519 0.250 Ac.</p> <p>#26 J. M. FRANKENBERG 517-1097 0.237 Ac.</p> <p>#27 J. L. & V. MILLER 537-672 0.243 Ac.</p> |
|--|---|
-
- | | |
|---|---|
| <p>#28 W. L. BURRIS 657-803 0.332 Ac.</p> <p>#29 Nancy L. SHANNON 723-644 0.283 Ac.</p> <p>#30 R. J. WEINCE 813-1031 0.283 Ac.</p> <p>#31 T. L. & V. McEHEENY 551-201 0.283 Ac.</p> <p>#32 W. K. BLUE 591-1090 0.283 Ac.</p> <p>#33 R. D. KLEPPEN 593-722 0.282 Ac.</p> <p>#34 K. E. FERRI 551-254 0.335 Ac.</p> <p>#35 B. MAZZONE 551-131 0.342 Ac.</p> <p>#36 D. M. MARSE 775-1109 0.333 Ac.</p> <p>#37 R. V. PETRICK 661-337 0.333 Ac.</p> | <p>#38</p> <p>#39 W. R. & W. M. CHATELAIN 531-913 0.333 Ac.</p> <p>#40 J. BRUCE 603-771 0.281 Ac.</p> <p>#41 T. P. AKERS 834-457 0.280 Ac.</p> <p>#42 J. BRUSHAM 551-574 0.279 Ac.</p> <p>#43 R. G. WILSON et al. 817-541 0.237 Ac.</p> <p>#44 M. D. ROACH 856-447 0.232 Ac.</p> <p>#45 J. W. & M. BLASUS 551-540 0.300 Ac.</p> <p>#46 R. A. & A. BRAUN 556-1077 0.357 Ac.</p> <p>#47 T. A. & A. COLLIER 878-280 0.335 Ac.</p> <p>#48 W. J. SLY 766-771 0.332 Ac.</p> |
|---|---|

SCALE 1" = 200'

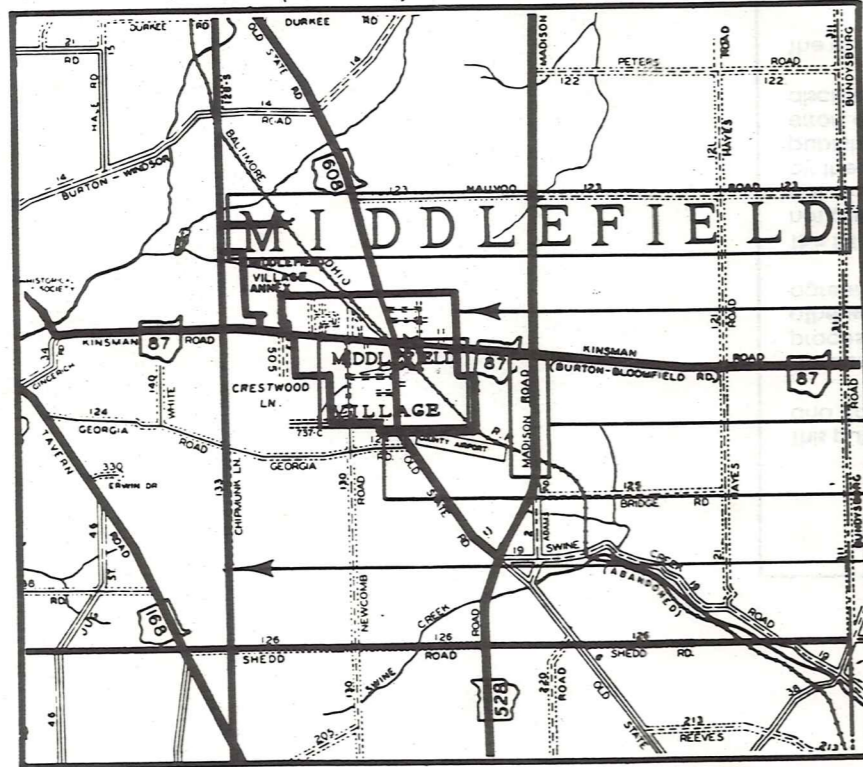
JAN. 1, 1992

RELATIVE REPRESENTATION

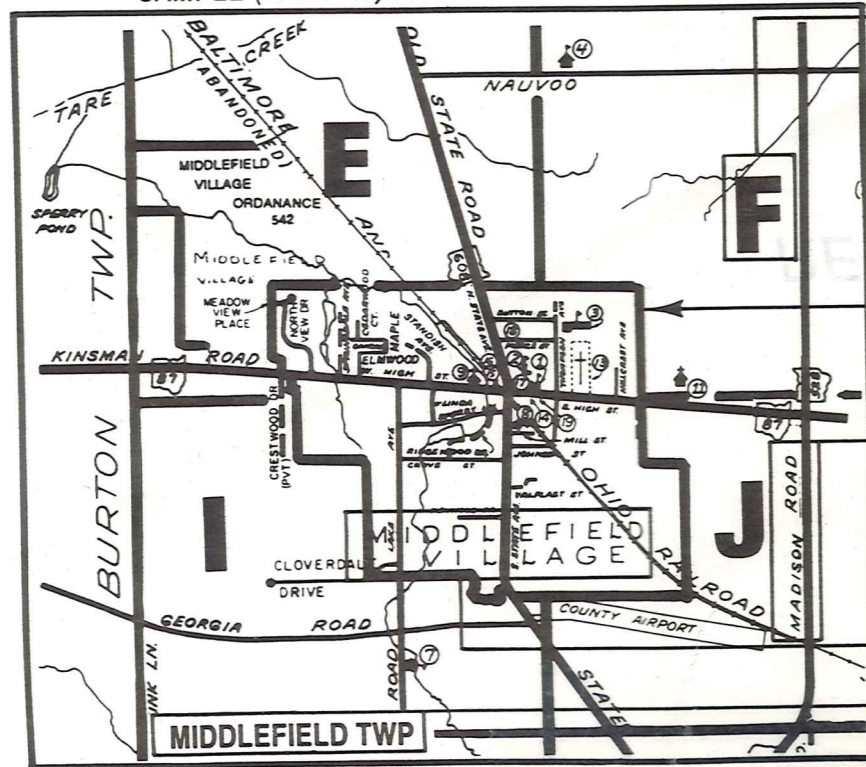
Explanation and Use Sheet for Geauga County, Ohio

A

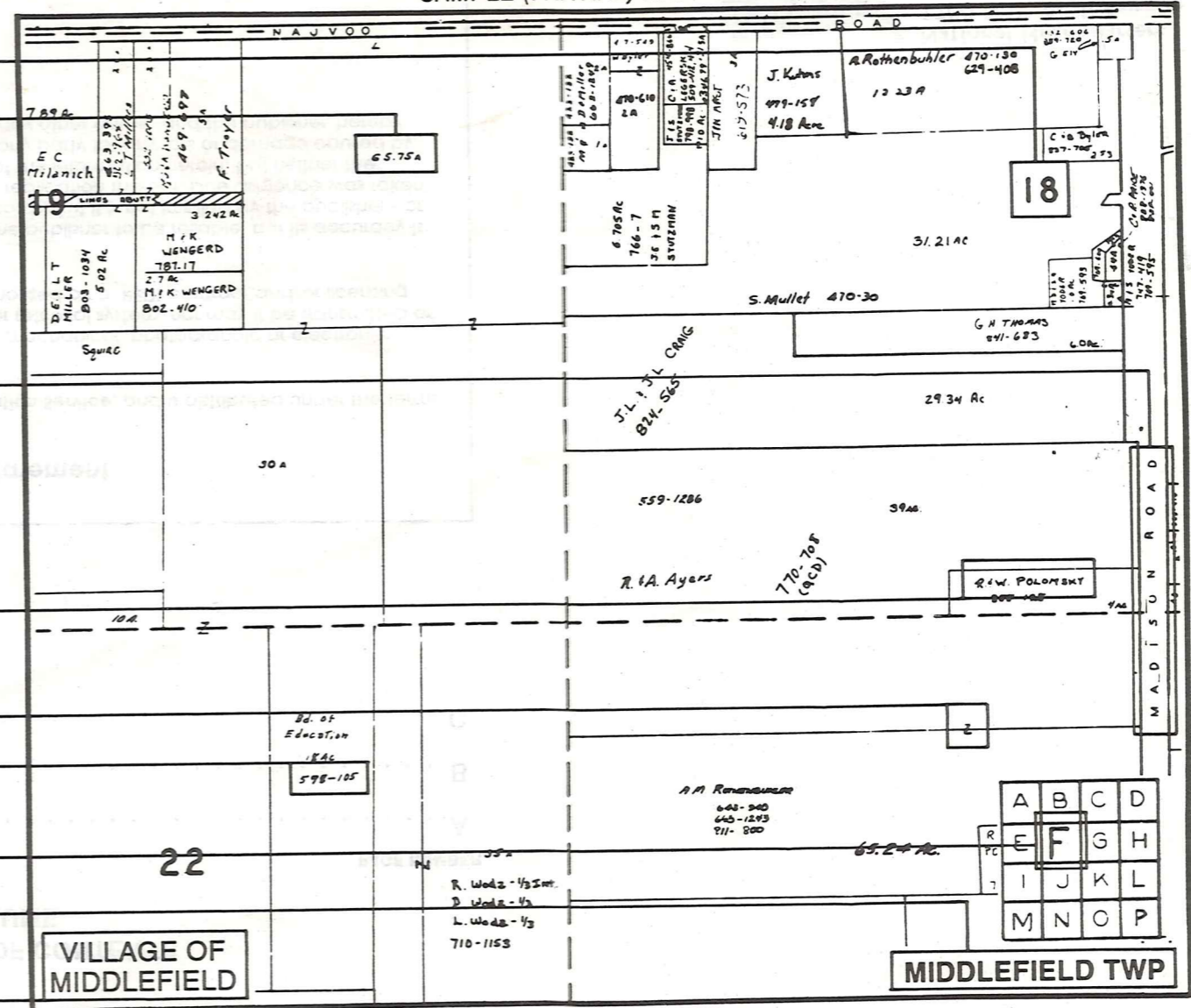
SAMPLE (PARTIAL) COUNTY INDEX MAP



SAMPLE (PARTIAL) MUNICIPALITY INDEX MAP



SAMPLE (PARTIAL) MAP PAGE



- Tract Lot Number
- Acreage
- Township Name
- Village Boundary
- Street Name
- Village Name
- Township Boundary
- Owners Name
- Denotes Continuous Ownership
- Deed Book & Page
- Map Page Number
- Township Name
- Village Name

- Village Boundary
- Street Name
- Village Name
- Township Name

USE OF THE MAP VOLUME

1. LOCATE THE GENERAL AREA OF INTEREST ON THE COUNTY INDEX MAP AND NOTE THE MUNICIPALITY NAME (TOWNSHIP OR VILLAGE).
 2. REFER TO THE TABLE OF CONTENTS AND NOTE THE BEGINNING ATLAS PAGE NUMBER FOR THE MUNICIPALITY OF INTEREST.
 3. TURN TO THE PAGE INDICATED, ON THIS PAGE WILL APPEAR AN INDEX MAP FOR THAT MUNICIPALITY.
 4. LOCATE THE GENERAL AREA OF INTEREST AND NOTE THE MAP PAGE NUMBER. THIS MAY BE EITHER A LETTER OR A NUMBER.
 5. MAP PAGES ARE IN ALPHABETICAL (OR NUMERICAL) SEQUENCE FOLLOWING THE MUNICIPALITY INDEX MAP. FOLLOW SEQUENCE TO THE MAP PAGE INDICATED.
 6. LOCATE SPECIFIC PARCEL OF INTEREST AND NOTE THE DESIRED INFORMATION.
- NOTE: ON SOME MAPS YOU MAY BE REFERRED TO A DETAIL SHEET SHOWING AN ENLARGEMENT OF THE AREA. THESE MAPS ARE FOUND AT THE END OF THE REGULAR MAP PAGES IN EACH MUNICIPALITY IN EITHER ALPHABETICAL OR NUMERICAL SEQUENCE.
- NOTE: CHARDON VILLAGE HAS TITLE SHEETS. TO LOCATE OWNERS NAME, NOTE THE PARCEL NUMBER, REFER TO THE TITLE PAGE FOLLOWING THE MAP OF INTEREST, FOLLOW NUMERICAL SEQUENCE TO THE PARCEL NUMBER OF INTEREST AND NOTE THE DESIRED INFORMATION. IN ALL OTHER MUNICIPALITIES THE OWNERS NAME APPEARS ON THE MAP PAGE.